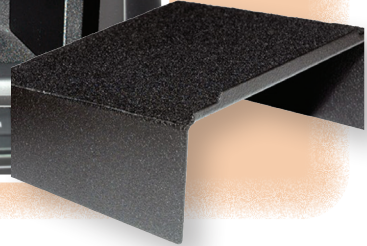




C7 New Products And Features



Dash Storage Compartment Shelf

- A must have item for your Stingray
- Introducing a simple solution to a simple problem
- Cushioned top using adhesive felt
- Fenced shelf top to help prevent stuff from getting trapped by screen closure
- Made in U.S.A.

257000 Each.....29.95

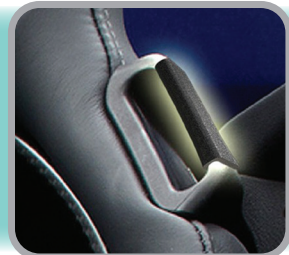


Transparent Acrylic Roof Panel

- Designed to block the sun on transparent, tinted roof panels
- Lightweight headliner material to help prevent interior over heating in the summer time
- Headliner adheres with suction cups, for easy installation and removal

607032 Each..... 99.95

Seat Belt Stay Retainer



- Sold in Pairs; Does Both Seats

As many C7 owners are aware, there is an issue with seatbelts not staying in the seatbelt guide due to a gap in the guide design. Some have taken it upon themselves to use heat shrink tubing to bridge the gap.

487014 (2 Pieces)..... 14.95



Carbon Fiber Look Interior Knob Covers

- Made in the U.S.A.
- Premium Billet Aluminum
- Meticulously Crafted
- 8-Piece Set

487015 Painted Set 8 Pieces (ND) ★Specify Color★.....185.95

487034 Carbon Fiber Look Set 8 Pieces (ND) ★Specify Color★.185.95



Kick Guard Protectors

These clear plastic molded protectors will help protect the bottom of your C7 door panel from scratches that occur when you get in and out of your car. Easy installation. Requires the removal of 1 screw (torque tool included) and snaps into place.

487003 Pair..... 69.95



Engine Cover Kit

SPECIFY COLOR

* **Specify color and trim letters color for fuel rail covers.**
Also available in Carbon Fiber Look.

Painted engine kit includes the following pieces:

- Fuel Rail Covers • Fuse Box Cover
- Alternator Cover • Surge Tank Cover
- One Piece Brake Reservoir/Brake Booster Cover
- Brake Control Cover • ECM Control Cover

Fiberglass covers attach with supplied Velcro for easy access during cleaning. Installation takes less than two minutes per piece.

Premium covers are made from hand laid fiberglass and fit perfectly around your stock reservoir tank and booster.

307100 Kit (ND)	1079.95
307138 Fuel Rail Cover-Smoothie, pr. (ND)	335.95

★Specify Color and Trim Color★



Intake Runner/Plenum Cover

Your car already looks great on the outside; now make it shine on the inside when you add this Plenum Cover Kit to your engine bay. These pieces are designed to fit all C7 intake manifold/plenums. You'll get more eyes on your engine and more trophies in your case when you trick out your engine bay with this accessory.

307010 Polished/Brushed Stainless Steel Kit (9 pcs.)	215.95
--	--------



307105 Intake Cover

307138
Fuel Rail

SPECIFY COLOR

Intake/Plenum Cover

- Available in all body colors or carbon fiber look finish.

307105	289.00
--------	--------



ALSO AVAILABLE FOR Z06

- Power, Protection and Simplicity

AFE Momentum Pro Intake System

After a rigorous design and testing phase, the results are in. The Momentum Air Intake System outflowed the factory intake by 42% and resulted in 18 additional horsepower and 22 lbs. x ft. torque to stock LT1, and 46 horsepower/39 lbs. torque to the Z06.

157010 Except Z06	472.95
157001 Z06	549.95
157011 Z06 Carbon Fiber	1449.95

CAGS Skip Shift Eliminator/Bypass

535057	18.95
--------	-------

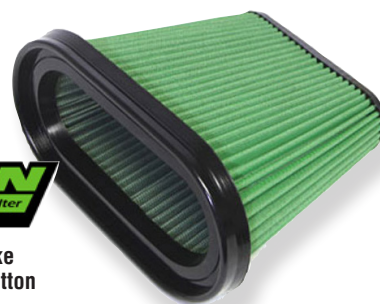


Suspension Lowering Bolt

586029 (Set of 4)	54.95
-------------------	-------

Green Performance Air Filter

GREEN
High Performance Air Filter



- Upgrade Your Air Intake
- 2 Layer Interwoven Cotton
- Lifetime Guarantee
- Reusable

157000	89.95
152012 Cleaner and Oil Kit	11.95

Green Filter Air Intake System

C7 Stingray with LT1 Engine Cold Air Intake System with Tube by Green Filter. Designed to increase horsepower and torque of the C7 engine. Washable and reusable. This Corvette air filter lasts the lifetime of your vehicle.

The Cold Air Intake routes more cooler outside air into your engine for even more power and reduced fuel consumption. Instead of replacing the OEM filter several times a year, just clean and re-oil the Green Filter pleated cotton low-restriction element.

157003 Each	449.95
-------------	--------



Suspension



ridetech

Control Arm Bushing Upgrade-RideTech Delrin

- Bushing design eliminates control arm shift common with factory bushings
- Reduction in deflection creates more consistent and predictable handling
- Trunnion design captures bushings from both sides; increasing strength and rigidity in upper arms
- Designed to resist binding at extreme alignment settings
- Includes new trunnions CNC machined from 4130 chromoly
- No modifications necessary

577002 (16 Pcs.) (ND) 1450.00

587004 GForce Outlaw 1500 HP Axle Upgrade, pr. (ND)... 2199.95



PFADT
SERIES BY AFE POWER

Shock Absorber-Johnny O'Connell Signature

- Revised Damping Curve
- Smoother Performance and Handling
- OE Style Fitment for Durability and Hassle-Free Installation
- Direct-Bolt on System Requires No Modifications

577000 Set (ND) 959.95



Granatelli
MOTOR SPORTS

Adjustable Rear Toe Link-Billet

- Turnbuckle style link allows for precise, fine-tuning
- Allow for installation with factory toe plates, if preferred
- .875 diameter 6061-T6 billet rods
- Heavy duty 5/8"-18 Teflon lined chrome-moly heim style rod ends

587003 Set 270.95

577003 Magnetuner Custom Tuner for Magnetic Ride Suspension (ND)

1299.00



PFADT
SERIES BY AFE POWER

Featherlight Single Adjustable Street/Track Coilover System

- Featherlight coilovers are ride height adjustable, as well as damping adjustable for rebound and compression
- Lightweight, hard anodized 6061-T6 aluminum bodies yield high strength while still maintaining a lightweight design
- Mono-Tube construction utilizes an internal floating piston to separate oil and gas allowing for more predictable handling, and a consistent feel
- BOA (Ball on Axis) front upper mount system is a completely sealed mono-ball design that allows full articulation resulting in a better ride and quiet operation

577001 Set (ND) 3309.95



PFADT
SERIES BY AFE POWER

Pfadt Series Sway Bar Front and Rear

- CNC Bent, Tubular Alloy Steel Adjustable Bar
- Polyurethane Bushings and CNC Machined 6061-T6 Aluminum Rear Brackets
- Heavy Duty 1/2" Rod End Endlinks and CNC Machined Articulation Spacers
- Direct Fit Installation; Requires No Modifications

587001 Set (ND) 799.95

Heavy Duty Stabilizer/ Sway Bar Link Kit

Replace the original weak plastic links on your Corvettes front & rear anti-sway bars with these heavy-duty links. Includes links, bushings and spacers for front and rear anti-sway bars. Use with factory or performance sway bars.

See Our WEBSITE for Photo.

575120 Kit 149.95



Dirt Away Coupe Hatch Weatherstrip Seal Kit

If you are like most people you get sick and tired of seeing dirt in the trunk area of your brand new C7 Stingray! Now there is a great solution. These seals are made to go on each side of the hatch area to seal out that mud and dirt! Installation takes only moments with these self sticking weatherstrip seals. Sold as a two-piece package.

NOTE: Fits Coupe Only.

637002 Pair 28.95

EZ Clutch Pedal Extension



- Installs in minutes
- Made of High Impact ABS
- Extends pedal 40mm
- Total weight with screws is 3.6oz
- 100% designed and manufactured in the U.S.A.

This 2014 Corvette EZ-Clutch Pedal Extension allows most drivers a more comfortable seating position so you don't have to sit so close to fully disengage your clutch. Will not alter clutch performance; designed only to improve the comfort and ergonomic position of the driver.

387100 49.95



Rear Window Cargo Shade/Luggage Cover

- Upper attaches to rear hatch window hooks
- Lower attaches to hooks on side panels in rear storage area

Upper and lower cargo security luggage shade with C7 flag logo (on upper only.) This is a two piece kit including the upper and lower shade which is directly behind the seats.

487010 Upper with C7 Flag Logo (ND)..... 134.95

487025 Upper and Lower (2 pc. Set) 179.95



Wheel Center Cap Applique Decals

Cap-Apps pop and are produced from the highest quality, high-performance, automotive-grade, 2ml, 3M vinyl. These overlays can remain permanent or be removed to change to a different color later.

647106 (Set of 4) ★Specify Color★ 39.95

★Specify Color★

-01 Chrome, -014 Black, -063 Red

-140 Laguna Blue, -188 Yellow,

-200 Carbon Fiber

Wheel Center Caps



647125
51.95



647160
51.95



647200
51.95



Outside Rear View Mirror Trim

- This is a GM Licensed Product
- 100% Stainless Steel
- Brushed finish with "Stingray" lettering
- Will not tarnish, fade, or rust
- Adds a unique look and style to your car
- Easy "peel and stick" installation takes just minutes
- Fits C7 Corvette Stingray with Auto-Dim mirrors
- Sold as a 2-piece set
- Made in USA!

517000 Stingray, Pair ★Specify Color★ 98.95

517016 Z06 Carbon Fiber Look, Pair ★Specify Color★ 98.95

C7 Carpet Mats



Lloyd's Ultimat offers a superb combination of luxury and performance...

- Premium continuous filament yarn
- Face weight of 32-ounce per yard (5/16" pile height) - thicker than OEM
- Two-ply yarn construction creates durability and density by weaving two yarn strands into one tuft
- Computer driven cutting process insures precise fit
- Carpet colors match or compliment OEM interior
- Matching continuous cloth edge binding can't unravel
- Multi-layer backing maintains mat shape and protects OEM carpet
- Water-resistant latex layer protects factory carpeting
- Non-skid rubber TractionBac also provides moisture protection
- Factory-compatible mat fastening (post, hook, snap) where applicable
- Absolutely stays put for optimum safety and durability
- 5-year warranty against defects in design, workmanship and materials

General Motors Trademarks used under license to Lloyd Design Corp.



Lloyd Floor Mats

137002	Flag Emblem, pr.	138.95
137055	Flag Emblem w/Silver Corvette Script, pr.	156.95
137089	Flag Emblem w/Black Corvette Script, pr.	156.95
137073	Flag Emblem w/Silver Stingray Script, pr.	156.95
137100	Flag Emblem w/Black Stingray Script, pr.	156.95
137018	Stingray, pr.	138.95
137112	Stingray w/Silver Corvette Script, pr.	156.95
137164	Stingray w/Black Corvette Script, pr.	156.95
137139	Stingray w/Silver Stingray Script, pr.	156.95
137186	Stingray w/Black Stingray Script, pr.	156.95
137103	Black Z06 Logo Floor Mats	138.95
137105	Black Z06 Logo and Flag Floor Mats	156.95
137003	Black Floor Mats w/Jake Logo	138.95
137090	Black Floor Mats w/Jake & Corvette Racing Logo	154.95

Available colors: 14 = Jet, 106 = Gray, 95 = Brownstone



Lloyd Cargo Mats

137200	Flag Emblem, ea.....	179.95
137221	Flag Emblem w/Silver Corvette Script, ea.....	197.95
137230	Flag Emblem w/Silver Stingray Script, ea.....	197.95
137215	Stingray Emblem, ea.....	179.95
137237	Stingray Emblem w/Silver Corvette Script, ea.	197.95
137246	Stingray Emblem w/Silver Stingray Script, ea.	197.95
137004	Black Z06 Logo Coupe Cargo Mat.....	179.95
137088	Black Z06 Logo Convertible Cargo Mat	179.95
137119	Black Z06 Logo and Flag Cargo Mat (Specify Coupe or Convertible)	183.95
137115	Black Coupe Cargo Mat w/Jake Logo.....	179.95
137104	Black Convertible Cargo Mat w/Jake Logo	179.95
137127	Black Coupe Cargo Mat w/Jake & Corvette Racing Logo.....	197.95
137116	Black Conv. Cargo Mat w/Jake & Corvette Racing Logo .	197.95

Floor and Cargo Mat Sets

- Specify Coupe or Convertible



★Specify Color★

-95 Brownstone
-106 Gray
-14 Black

137007	C7 Flag.....	294.95
137079	C7 Flag and Corvette Script.....	329.95
137106	C7 Flag and Silver Stingray Script.....	329.95
137128	Stingray Emblem.....	294.95
137141	Stingray Emblem and Corvette Script.....	329.95
137190	Stingray Emblem with Stingray Script.....	329.95
137008	Z06 Logo.....	294.95

147038	Black Factory Floor Mats with Red Stitching with Z06 Logo, pr. (ND)	154.95
137020	Cargo Mat-Black Factory-Coupe Premium Carpet Cargo Mat with Embroidered CT Z06 Logo (ND)	205.95

137056	Clear No Slip Floor Mats, pr.	49.95
--------	------------------------------------	-------



With Blackouts

- 497002 Acrylic Tail Light Blackout Kit (Set of 4) 69.95
 497004 Acrylic Side Market Blackout (Set of 4) 59.95
 497020 Rear Bumper/Valance Panel Reflector Acrylic Blackout 38.95

Painted Hood Heat Extractor

★Specify Color★



- 467007 Except Z06 219.95
 467021 Z06 209.95



Painted Air Intake Cover

★Specify Color★

157006 199.95

Brake Caliper Cover With Corvette Or Stingray Engraved Script

• Made of 6061-T6 Aerospace Aluminum



- 197010 Corvette Script (Set of 4) 249.95
 197020 Stingray Script (Set of 4) 249.95

★Specify Color★ Red, Black, Matte Black Powder Coated

- 197011 Braided Brake Hose-Stainless Steel-Except Z06, Set 209.95
 197021 Braided Brake Hose-Stainless Steel-Except Z06, Set 219.95

★Specify Color★ Red, Yellow, Blue



- 567000 Steering Wheel Cover 34.95



Smoked or Clear Side Marker or Rear Bumper Reflector

- New Side Marker Lights-complete replacement, plug and play
- Looks factory, OEM style LED replacement

These are OEM quality and complete replacement lamps. Not a flat acrylic cover that will stick out when installed. Not a film that will leave you with bubbles and shrink over time exposing the factory light edges.

- 497003 Smoked Side Marker Lamps (Set of 4) 129.95
 497019 Clear Side Marker Lamps (Set of 4) 149.95
 494070 Smoked Reflectors 99.95
 497021 Clear Reflectors 99.95



Painted or Carbon Fiber Hood Scoop Vent Insert

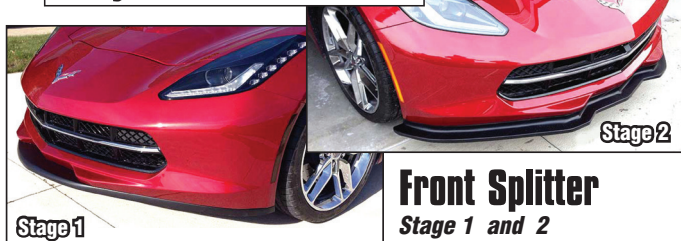
This C7 Corvette Stingray Hood Vent Insert might be the single best looking change you can make to your C7. Removal and installation is a breeze. Just remove two (2) screws and pry it out / pop back in place to re-install.

NOTE: This Hood Scoop Vent Insert is custom made. Please allow 3-4 weeks for delivery.

- 467030 Except Z06, Each (ND) ★Specify Color★ 234.95
 467025 Z06, Each (ND) ★Specify Color★ 259.95
 467004 Carbon Fiber Except Z06 (ND) 599.95
 467013 Z06 Carbon Fiber (ND) 649.95
 467001 Polished Laser Mesh Hood Grille Insert 260.95



SPECIFY COLOR



Front Splitter Stage 1 and 2

Are you looking to give your C7 Corvette Stingray just a little more of an aggressive look? Look no further than this front splitter. We offer these ZR7 pieces in Carbon Flash Metallic to match the exterior trim pieces on your Stingray, we also offer them painted in the body color, flat black, and hydro carbon fiber. This kit includes ZR7 front splitter and all hardware to complete installation.

147000	Front Splitter Stage 1	499.95
147010	Front Splitter Stage 2	549.95
147020	Front Splitter Standard-Z06 Style	579.95
147108	Front Splitter-Z06 Style	419.95

Stage 1 Z06 has a Front Splitter, a little taller Spoiler than a Z51, no Side Skirts.

Stage 2 Z06 has a larger Splitter than Stage 1, and a taller Spoiler with an open center. Stage 2 also has Side Skirts.

Stage 3 Z06 Splitter has aggressive edge/wings, taller Spoiler with adjustable see through wicker, and same Side Skirts as Stage 2.



Splash Guards

107029	Front Black Molded Plastic, pr. (ND)	84.95
107210	Rear Black Molded Plastic, pr. (ND)	84.95
337029	Front Carbon Fiber, pr.	399.95
337033	Rear Carbon Fiber, pr.	399.95



Rear Fiberglass Spoiler

- No drill rear spoiler
- Fits over the top of factory third brake light

These spoilers are made of the highest quality fiberglass. Painted using PPG Hi Refinish paint for long lasting crisp paint matching.

These spoilers are made and painted to order, so please allow additional time from order date to ship date.

147201 (ND)	★Specify Color★	299.00
-------------	-----------------------	--------



SPECIFY COLOR



Side Skirts

Are you looking to give your C7 Corvette Stingray just a little more of an aggressive look? Look no further than these side skirts. We offer these in Carbon Flash Metallic to match the exterior trim pieces on your Stingray. We also offer them painted in the Corvette body color, flat black, and hydro carbon fiber. This kit includes both side skirts and all hardware to install the package.

147150	Side Skirts-Stage 2, Pr	629.95
147200	Side Skirts-Z06 Style, Pr	419.95

Quick Disconnect CB Antenna with Mounting Bracket

167001	189.95
--------------	--------

★Specify Color★ Red, White, Black

Bumper Saver/Skid Plate Roller Wheel Set



Eliminates costly front-end damage caused by lowering, steep driveways, etc. Active skid plate design with proprietary integrated urethane wheels. Installs in approximately 1-hour. (Welding not required but recommended.)

337020	132.50
--------------	--------



Curb Alert-Curb Warning System

- Advanced infrared triangulation technology and specialized software embedded for reliable operation
- Warning distance is adjustable from 8-28 inches. (Bumper to curb)
- Automatic power-up on vehicle ignition; never a battery drain
- Alert sound volume can be set to High, Low, or Mute inside vehicle

107425	159.95
--------------	--------

Insulated Windshield Sunshade



Folding accordion windshield sunshade, one side is silver reflective fabric and the inner side is soft felt.

107159	With Logo (ND)	99.95
107414	Plain (ND)	69.95



Lingenfelter Stage 1 Z06 720 HP Upgrade Kit

The Lingenfelter Stage 1 Kit produces 720 HP and 730 LB-FT of torque at the flywheel.

The LPE Stage 1 Z06 kit includes virtually all of the required parts other than the engine calibration.

Engine Dyno Testing Results:

- 720 HP at 6100 RPM
- 730 LBS-FT at 750 RPM
- 13 psi Boost Increase of Roughly 2.5 psi

307001 (ND)..... 1195.00

Z06 Granatelli Intercooler Expansion Tank



- Adding an extra 1.75 gallons of fluid goes a long way - it helps stop the blower sitting on top of the engine from heating the system.

Granatelli Motor Sports Heat Exchanger Expansion Tank is intended to be an easy direct fit installation for all 2015 and up C7 Z06 model Corvettes. This unique design adds 1.75 gallons to the vehicle's heat exchanger cooling system. A must for anyone increasing boost levels to the engine, or just doing spirited extended driving. Total OEM looking finish and installation appearance.

With slight modification to one hose, the installation on a cool engine should take no more the 30 minutes.

307006 822.95

Z06 Air Intake Heat Exchanger

Designed to hold more fluid, allows Supercharger to cool down faster.

307026 669.95

NEW
PRODUCT

Redlight Bandit Throttle Booster

307190..... 99.95



Granatelli Mass Air Flow/MAF Sensor w/Cold Air Induction

- Direct OEM replacement, won't void your factory warranty.
- Improves mileage and throttle response
- Improves performance from 2,000 RPM to red line
- Compatible with most electronics and aftermarket bolt-on performance equipment
- Installs in 10-15 minutes using basic hand tools

307021 With Cold Air Induction..... 322.50

307015 Without Cold Air Induction 292.95

MSD Spark Plug Wire Set

- Wires precut to exact specifications
- 10.5" overall end-to-end length
- 8.2mm spiral core super conductor wire
- MSD multi-angle spark plug boots
- Low resistance, superior noise suppression

307007 Red Set (ND)..... 99.95

307020 Black Set (ND) 99.95

307016 Stock Spark Plug Wire Set.....59.95

Performance Programmers

306170 In-Tune Diablo..... 419.95

306153 Trinity Diablo..... 539.95

305423 HP Tuner Suite-Standard 499.00

305444 HP Tuner Suite-Pro 649.00



**Don't risk damaging your
C7 Rockers when you
need to jack it up!**

These jacking pads can be used with a jack or jackstands. Will not damage the body if used as directed. When inserted into the shipping slots and turned, they will not fall out! **Do not drive car when installed.**

107209 Aluminum (Set of 4) 64.95



Engine Cap Cover

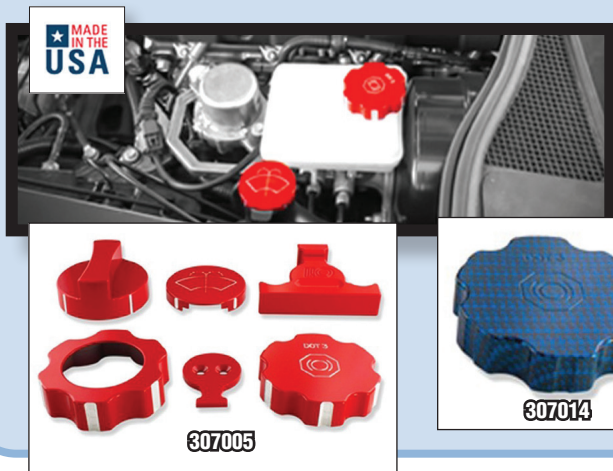
Set includes:

- Oil cap cover
- Water tank cap cover
- Brake fluid cap cover
- Power steering fluid cap cover
- Windshield washer tank cap cover

★Specify Color★
-01 Black, -02 White, -03 Yellow
-04 Blue, -05 Red

Each cap cover features a chrome cap with a brushed stainless steel emblem and a carbon fiber inlay. Easy peel-and-stick installation with Velcro attachment cookies (included).

307101	Slotted Carbon Fiber-w/AT-C7 Flag (Set of 5).....	119.95
307200	Slotted Carbon Fiber-w/MT-Ct Flag (Set of 6)	143.95
307120	Slotted Carbon Fiber-w/AT-C7 Stingray Emblem (Set of 5) ..	119.95
307215	Slotted Carbon Fiber-w/MT-C7 Stingray Emblem (Set of 6) ...	143.95
307125	Slotted Carbon Fiber-w/AT-Corvette Script (Set of 5).....	119.95
307231	Slotted Carbon Fiber-w/MT-Corvette Script (Set of 6)	143.95
307146	Slotted Carbon Fiber-w/AT-C7 Stingray Script (Set of 5)	119.95
307262	Slotted Carbon Fiber-w/MT-C7 Stingray Script (Set of 6)	143.95
307042	Grand Sport Carbon Fiber Engine Cap Cover Set- Manual (Specify Color).....	146.95
307030	Grand Sport Carbon Fiber Engine Cap Cover Set- Automatic (Specify Color)	121.95
307118	Engine Cap Cover Set- Carbon Fiber with C7 Flag and Grand Sport Script-Manual ★Specify Color★	146.95
307104	Engine Cap Cover Set- Carbon Fiber with C7 Flag and Grand Sport Script-Automatic	121.95



Engine Cap Cover Set Z51 or Z06

- For cars with external engine oil tank
- Made in USA!

Each part is made from premium aluminum billet and finished with a durable paint coat as rich and lustrous as the one on the exterior of your Corvette.

Caps are easily installed over the OEM parts. Comes as a 6-piece set that covers; 1 Windshield Washer Cap, 1 Master Cylinder Cap, 1 Oil Dipstick Handle, 1 Radiator Cap, and 1 Oil Tank Fill Cap. All parts clip/screw on or adhere with double sided 3M automotive tape.

307005	★Specify Color★ (ND) (6 pcs.)	289.95
307014	Carbon Fiber ★Specify Color★(ND) (6 pcs.)	289.95



Fuse Box Cover With Stingray Emblem

- 100% Stainless Steel
- High Polished, Mirror Finish with Brushed Face

307025	★Specify Lettering Color★	179.95
--------	---------------------------------	--------

Painted Engine Cap Cover Set



- Billet Aluminum
- Exact Pressure Fit
- Available in all body colors
- Available with custom etchings and lettering colors

307012	Automatic Except Dry Sump System.....	239.95
307031	Automatic With Dry Sump System	239.95
307103	Manual Except Dry Sump System	289.95
307110	Manual With Dry Sump System.....	289.95



Z51 Wheels

- Chrome
- Black
- Machined Face
- Z51 & Non Z51 Sizes

644202	Chrome 18 x 8.5.....	320.00
647105	Chrome 19 x 8.5.....	360.00
646197	Chrome 19 x 10 +79.....	370.00
647217	Chrome 20 x 10.....	415.00
644213	Gloss Black 18 x 8.5.....	240.00
646205	Gloss Black 19 x 10 +79.....	290.00
647126	Gloss Black 19 x 8.5.....	280.00
647220	Gloss Black 20 x 10.....	305.00

C7 Wheel Size Chart

Size	Offset	Location
18 x 8.5	+56	Front Exc. Z51
19 x 8.5	+79	Front Exc. Z51
19 x 10	+43	Z06 Front
19 x 10	+79	Rear Exc. Z51
19 x 10.5	+42	ZR1 Front
20 x 10	+79	Rear Exc. Z51
20 x 12	+59	Z06 or ZR1 Rear

Wheel Hardware

107019	Valve Stem Cap with C7 Logo-Chrome (Set of 4) (ND).....	26.95
107312	Valve Stem Cap with C7 Logo-Black (Set of 4) (ND).....	28.95
645206	Wheel Lug Nuts -(Set of 20)-For Factory Polished or Chrome Wheels..	84.95
645059	Wheel Lug Nuts -(Set of 5)-For Factory Polished or Chrome Wheels..	27.95
647000	Stingray Wheel Center Cap-Factory (ND).....	51.95
647101	Wheel Center Cap Gray with C7 Logo-Factory (ND).....	51.95
647125	Wheel Center Cap Z51 Chrome-Factory (ND).....	51.95
647160	Wheel Center Cap Black with C7 Logo-Factory (ND).....	51.95
647200	Wheel Center Cap Corvette Racing-Factory (ND).....	51.95
647216	Wheel Center Cap Z51 Gray-Factory (ND).....	51.95

Z06 Wheels



**BUY A SET
OF 4 AND
GET 10% OFF**

644218	Gloss Black 18 x 8.5.....	265.00
647146	Gloss Black 19 x 8.5.....	305.00
646218	Gloss Black 19 x 10 +79.....	310.00
647153	Gloss Black 20 x 10.....	330.00
646226	Gloss Black 20 x 12.....	355.00
644177	Chrome 18 x 8.5.....	335.00
647102	Chrome 19 x 8.5.....	370.00
646049	Chrome 19 x 10 +79.....	380.00
647114	Chrome 20 x 10.....	425.00
646053	Chrome 20 x 12.....	470.00



ZR1 Wheels

- Chrome
- Black

644178	Chrome 18 x 8.5.....	335.00
646342	Chrome 19 x 10 +40.....	380.00
646414	Chrome 19 x 10 +79.....	380.00
646081	Chrome 20 x 12.....	470.00
644221	Carbon Black 18 x 8.5.....	265.00
646405	Carbon Black 19 x 10 +40.....	310.00
646456	Carbon Black 19 x 10 +79.....	310.00
646229	Carbon Black 20 x 12.....	355.00



Coupe Rear Cargo Partition

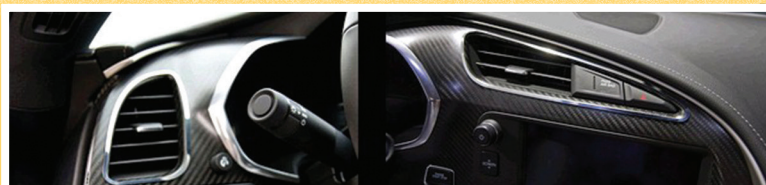
487031.....149.95



Door Panel Kick Plates ★Specify Color★

If you are looking for a unique way to add a little more flare to the inside of your Stingray then you will want to consider these custom door kick plates. These kick plates come in any C7 body color or Hydro Carbon Fiber.

487033 Pair129.95



487011 Polished Stainless Steel Air Conditioning Vent Trim Bezel (Set of 2) 38.95

487006 Brushed Stainless Steel Mirror Control/Heads Up Display Trim Plate - Coupe Only42.95



Radio/Heater Dash Knob Bezel/Trim Ring

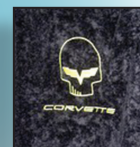
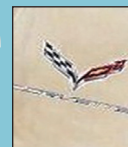
257100 Brushed Aluminum (Set of 4)..... 59.95

Escort/Passport Radar Detector to Mirror Mount Bracket
107280.....37.95



Seat Armour

- Protects Your Expensive Leather Seats
- Easy to Slip-On, Slip-Off
- 100% Heavyweight Cotton/Terry Velour
- Silk Screen Logo
- Machine Washable



137006 Black with C7 Logo34.95

137118 Gray with C7 Logo34.95

137021 Tan with C7 Logo34.95

116883 Black with Jake Logo34.95

116908 Gray with Jake Logo34.95



Blockit-Interior Sound Deadener Mat

- Reduce interior noise in seconds
- Takes the edge off tire/road noise and some aftermarket exhausts
- Pre-cut and lays right over your factory carpet
- Real acoustical soundproofing materials
- UV protected top layer
- Made in the USA!

137102 Coupe-3 piece set (ND).....229.95

Sunvisor Label Cover

- Cover up those annoying and unsightly sunvisor labels.

486108 Pair.....16.95



Center Console Door Cover-EZ Fit Black

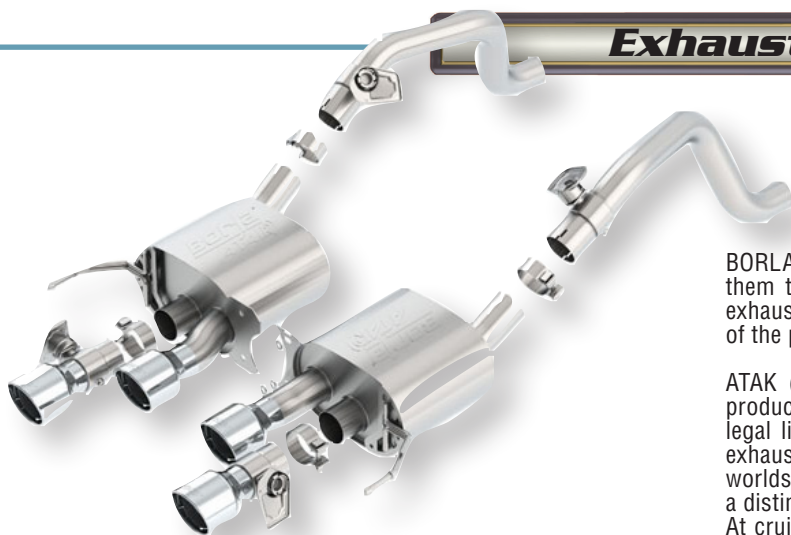
- Synthetic stretch mesh fabric and heavy duty elastic trim
- Slip-on installation with a snug fit

235007..... 34.95

Exhaust



BORLA
EXHAUST



BORLA has developed a revolutionary new exhaust design that enables them to deliver unprecedented control over the acoustical note of an exhaust system throughout the entire RPM range, while retaining 100% of the power-adding capabilities of BORLA's patented muffler design.

ATAK (Acoustically-Tuned Applied Kinetics) is a new technology that produces the highest available dB (decibel) levels in the BORLA street-legal lineup, and is designed for high-performance purists who prefer exhaust notes over their stereos. With ATAK you get the best of both worlds - race proven technology from Borla's line of XR-1 mufflers PLUS a distinct muscle-car roar that was built specifically for the C7 Corvette. At cruise the interior sound is not overpowering - yet when driving the sound connects you to your Corvette helping you know exactly where you are in the RPM range - talk about Corvette performance at a very high level! In addition - Borla's new exhaust design eliminates the unwanted drone associated with performance systems providing a very comfortable sound when cruising.

Like all BORLA exhaust products, each system is handmade in the USA by master craftspeople and features premium 300-Series high-quality austenitic stainless steel construction, ultra-smooth mandrel bent piping, mirror-polished tips, and a Million-Mile Warranty.

Hear the difference between Borla's Touring, S-Type, and ATAK Corvette exhaust systems on our WEBSITE.

Borla's C7 Corvette rear section exhaust systems are covered under our Million-Mile Warranty for non-moving parts. The exhaust valves are warrantied for 3-years.



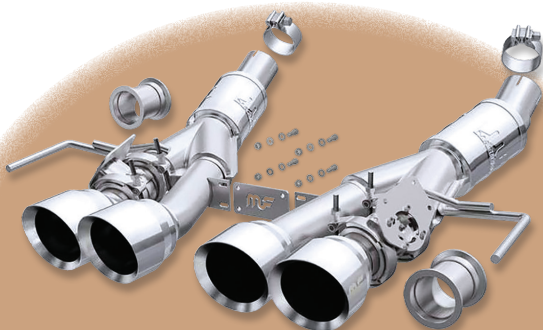
X-Pipe (Bolts to Factory Exhaust)

327029..... 379.95

327025	S-Type Muffler w/NPP-Round Intercooled Tips (ND)	2183.95
327007	S-Type Muffler w/NPP-Round Rolled Edge Tips (ND)	2121.95
327115	S-Type Muffler wo/NPP-Round Intercooled Tips (ND)	1894.95
327014	Atak Muffler w/NPP-Round Intercooled Tips (ND)	2296.95
327022	Atak Muffler w/NPP-Round Rolled Edge Tips (ND)	2296.95
327024	Atak Muffler wo/NPP-Round Intercooled Tips (ND)	1792.95
327008	Z06 S-Type Muffler NPP-Round Intercooled Tips (ND)	1751.95
327100	Z06 Atak Muffler NPP-Round Intercooled Tips (ND)	1889.95
327152	Z06 Atak Muffler NPP-Round Rolled Angle Cut Tips (ND)	1915.95



Magnaflow Valve-Back Exhaust System



Competition Series Stainless Steel Mufflers

- 3" Main Pipe Diameter
- Quad Center Rear Exit
- Straight-Through Muffler.

The Competition Series Stainless Exhaust system delivers maximum performance, reduced mass and an aggressive exhaust sound with a moderate interior sound.

327004.....2673.00



Mild 2 Wild Dual Mode Exhaust Remote Control Switch

- Opens optional bi-mode exhaust (NPP) and over rides factory settings.

327009 89.95

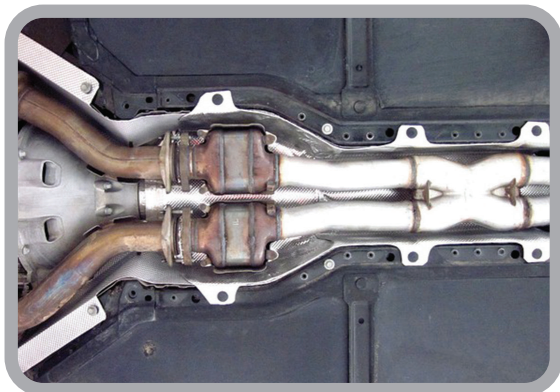


American Racing Header Exhaust System

For the 2014 and up C7 emissions friendly option aptly named 1-3/4" Mid Length Header System. The Mid Length kit allows you to reuse the secondary set of factory cats combined with the Severe Duty 49 State Legal Cats. The objective with this system is to improve performance yet dramatically lower the possibility of an engine light (without a tune).

The kit is a direct bolt-in made entirely in the USA using 304 Stainless Steel throughout. Other features include 3/8" thick laser cut flanges with tig welded and hand ported inlets, merge collectors with scavenger spikes and ball/socket connections for a leak free seal. Expect a quick and easy install with Grade 8 hardware and Flat Out Racing Gaskets.

327003	Header Exhaust System 1-3/4" With CATS (ND)	2278.95
327020	Header Exhaust System 1-7/8" With CATS (ND)	2419.95
327034	Header Exhaust System 1-3/4" Without CATS (ND)	2089.95
327051	Header Exhaust System 1-7/8" Without CATS (ND)	2221.95



Exhaust Heat Underbody Tunnel Shield

- Increases performance and durability
- Improves factory shielding
- Factory appearance and fit
- DIY bolt-on improvement
- Originally equipment grade engineered materials
- Detailed instruction guide included

327016..... 549.95

Catalytic Converter Heat Shield

- Dual layer design - Outer layer is our hi-temp Titanium material, inner layer is 89% silica material to handle extreme heat
- Reduce heat soak into oil
- Easy installation with stainless steel ties
- Helps prevent engine oil becoming too hot
- Includes four 20" locking ties and a FREE locking tie tool

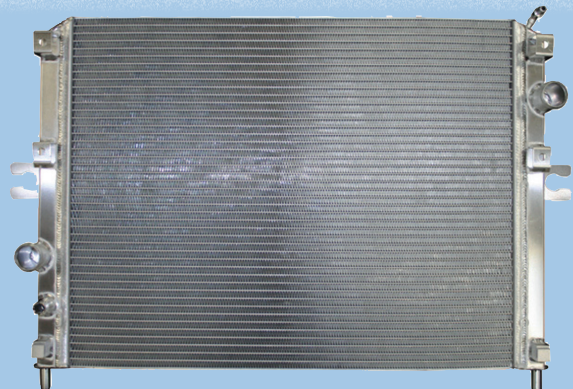
327010 Each..... 99.95



Twisted Header Pipes

- +24 HP and +24 LBS x ft Torque max gain *(Dyno results with Aftermarket X-Pipe also installed)
- Constructed of 3" mandrel-bent 304 Stainless Steel tubing
- A unique 3" to 2-1/2" stepped design, issued to increase exhaust velocity and increase usable torque. This means more aggressive throttle response and increased passing power
- 3" outlets connect directly to OE or Aftermarket Exhaust
- Heavy-Duty flanges and OE-Style gaskets are used to maintain a leak-free seal
- Optimized tube lengths improve flow and performance
- 3 lbs lighter than OE system
- MIG-Welded construction ensures optimal strength and durability

327033	With Converter	1269.95
327017	Without Converter	794.95



Aluminum Radiator

Upgrade your cooling system with our new 57mm double row aluminum radiator for all C7 Corvettes. This new "direct fit" radiator features serpentine fins and special dimpled cooling tubes.

247000	899.99
247025	Z06	1099.99



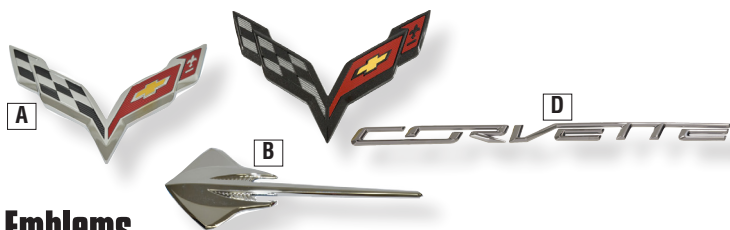
EXHAUST SHIPPING SPECIAL

MUFFLER PAIRS
\$34.95 SHIPPING

RETAIL ORDERS ONLY

SEE OUR
WEBSITE FOR
DETAILS

EXHAUST SYSTEMS
\$59.95-\$154.95 SHIPPING



Emblems

- GM Factory Emblem
- High Quality Plastic
- Stick on Application

297007	Carbon Fiber Look Front and Rear Emblem, Set	174.95
297033	Carbon Flash Emblem - 5 pc. Set.....	229.95
297000	A. Front Nose Emblem-Factory Chrome, ea	79.95
297025	B. Stingray Side Fender Emblem-Factory.....	59.95
297005	B. Stingray Side Fender Emblem-Carbon Flash	62.95
297001	C. Front Nose Emblem Carbon Flash-Factory	74.95
297018	C. Rear Bumper/Convertible Waterfall Emblem Carbon Flash-Factory	69.95
297020	C. Rear Bumper/Convertible Waterfall Emblem Factory Chrome	81.95
297030	D. Rear Corvette Script-Chrome-Factory	59.95
297006	D. Rear Corvette Script-Carbon Flash.....	52.95
297011	Z06 Supercharged Side Fender Emblem-Factory (Left)	38.95
297011	Z06 Supercharged Side Fender Emblem-Factory (Right)	31.95



467010
Chrome Button

467003
Emblem

Hood Insulator/Liner

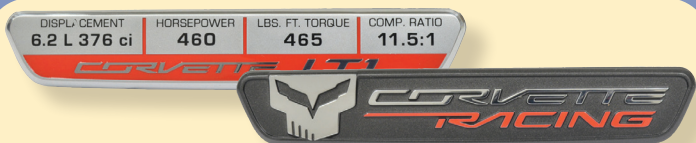
467003	Liner Emblem-Stainless Steel-Fits Factory Hood Pad.....	215.95
467010	Hood Liner Button/Fastener-Chrome (Set of 6)	14.95



Roof Panel Storage Bag/Cover

- Heavy Duty Vinyl Construction

607000.....81.95



Interior Trim Badge

237000	LT1/460 HP with NPP Option.....	94.95
237055	Stingray Emblem.....	94.95
237096	Chrome with Stingray Script.....	94.95
237021	Corvette Racing	94.95



Gas Door Guard/ Paint Saver Bib

367000.....9.95

Headlight Clear Protector



Static cling vinyl protectors, help protect your C7 Headlight Lens from rock chips and scratches.

447000 Pair 24.95

287001	Black Door Handle Scratch Guard.....	6.95
107127	Clear Door Handle Scratch Guard.....	6.95

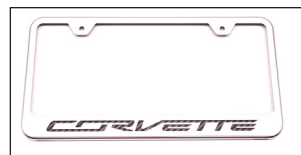
Rear License Plate Frames



106116 Billet Bezel Chrome.....129.95



107137 Stainless Steel with
Stingray Script Carbon Fiber
color letters.....47.95



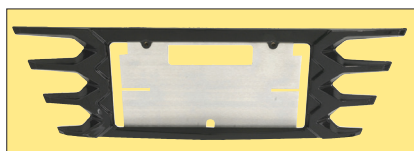
107144 Stainless Steel with
Corvette Script Carbon Fiber
color letters.....47.95



116813 Billet Open End Frame-
Chrome.....169.95



116837 Billet Bezel-
Chrome.....149.95



107224 Altec Design
★Specify Color★.....79.95



106486 Solid brass painted frames to match
your body color.....64.95



287014



Vertical Door Kit

- 2 Gas Shocks
- 2 VDC Hinges (one for each side)
- All Mounting Hardware
- Direct "Bolt On" Hinge Kit
- Mounts to Factory Bolt Pattern
- Made in the USA from Domestic Hardened Steel
- Patented in the USA
- Completely Reversible

287000 Vertical Door Conversion Kit..... INQUIRE
287014 Vertical Door Conversion Kit-ZLR (ND)..... INQUIRE



287000

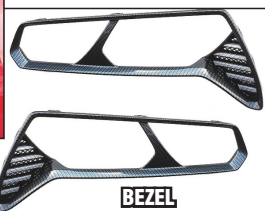
Tail Light Trim

- 100% stainless steel
- High polished finish • Will not tarnish, fade, or rust
- Easy "peel and stick" installation takes 10-15 minutes
- Does not include grilles • Sold as a set of 8

497130 Polished Stainless Steel Kit-Set of 8..... 179.95
497000 Brushed Stainless Steel Kit-Set of 8..... 179.95
497001 Polished Stainless Steel Trim Ring Kit, pr..... 152.95
497012 Brushed Stainless Steel Trim Ring Kit, pr..... 152.95



497136 SHOWN



BEZEL

Tail Light Bezels Or Insert

497121 Tail Light Bezel, Pair (ND) ★Specify Color★..... 279.00
497135 Tail Light Bezel Carbon Fiber Look, Pair (ND)..... 309.95
497005 Carbon Fiber, Pair (ND)..... 679.95
497136 Center Bar Insert, (Set of 2)..... 54.95



Grille Trim Ring

Dress up your C7 Corvette Stingray with this Polished Stainless Steel Front Grille Factory Trim Ring. This trim piece is designed to fit all the factory grilles and add a clean stylish look to your Corvette exterior.

427000 Polished Stainless Steel..... 107.95
427022 Z06 Front Grille-Stock 379.95
427001 Z06 Front Grille-Carbon Fiber Look (Fits Standard C7 also) .. 469.95



327042 Shown

327053 Shown



Exhaust Filler Panel

Dress up your C7 Stingray with this Polished Stainless Steel C7 Exhaust Filler Panel for standard Non-NPP or with NPP exhaust system. These trim pieces are designed to fit around the stock exhaust tips and add a clean stylish look to your Corvette exterior.

327053 Polished Stainless Steel-Except NPP Exhaust..... 98.96
327026 Polished Stainless Steel-With NPP Exhaust..... 98.95
327001 Brushed Stainless Steel-With NPP Exhaust 98.95
327042 Perforated Stainless Steel-Except NPP Exhaust..... 139.95
327015 Perforated Stainless Steel-With NPP Exhaust..... 139.95

Carbon Fiber Side Fender Vents



337005

337017

337005 Exc. Z06 or Grand Sport (ND) 599.95
337017 Z06 Pair (ND) 599.95
337000 Black Factory Side Vent Grille-Exc. Z06 or Grand Sport (L or R) 103.95

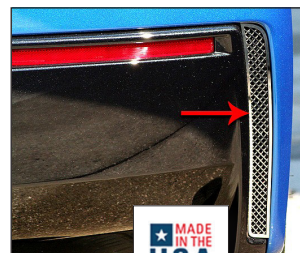


Rear Quarter Panel Vent Cover

Dress up your C7 Corvette Stingray with this Polished Rear Quarter Vent "Z06 Style" 10-piece set. These vents are designed to fit all C7 Corvettes over the rear quarter panel vents and add a clean stylish look to your Corvette exterior.

337010 Polished Stainless Steel-(10 Pieces)..... 179.95
(Will Not Fit Z06 or Grand Sport)

Rear Valve Panel Grilles



- 100% Stainless Steel
 - High polished, mirror finish
 - Laser mesh style for a unique Diamond glimmer
 - Easy "peel and stick" installation; takes 10-15 minutes
 - Made in the USA!
- 337015 Polished Stainless Steel Laser Mesh Vent Grilles, pr..... 170.95
(Will Not Fit Z06 or Grand Sport)



Nose Mask



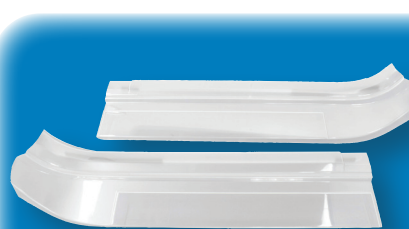
107554	Except Z06 or ZR1	129.95
107609	Z06	129.95
107403	Embossed Logo - Exc Z06/GS (ND)	149.95
107454	Embossed Logo Z06/GS (ND)	159.95



Nose Masks

107413	Except Z06 No License Plate (ND)	659.95
107287	Z06 Stage 1	659.95
107343	Z06 Stage 2	659.95
107366	Z06 Stage 3	659.95
107219	Front Hood Cover	189.95
107420	Mirror Cover, pr. (ND)	209.95

Stretch Fit Nose Mask- Novistretch



Clear Door Sill Covers

- Covers full painted sill area and plastic sill panel
- Hides existing scuffs

Sill ease wraparound sill protectors are available in clear high impact acrylic. The clear model is textured just enough to hide existing scuff marks, yet lets the interior color show through. Pressure fit installation.

107305	Clear Acrylic, Pair	74.95
107436	With Embossed Corvette Logo, Pair	89.95
107553	Embossed Stingray Logo, Pair	89.95



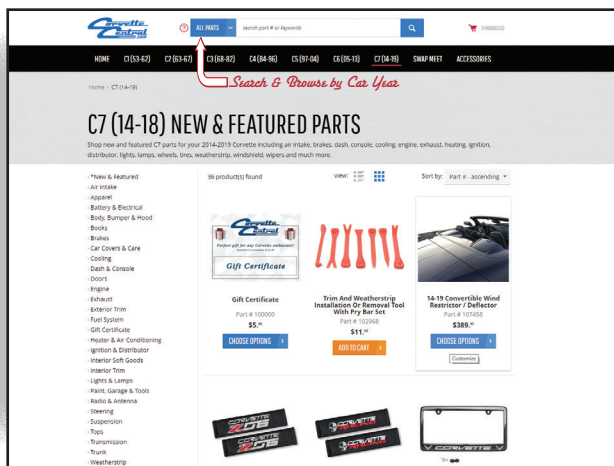
License Plate Bracket

The STO N SHO is a custom fit after market two piece detachable front license plate bracket mounting system consisting of a front license plate holder and a base mounting plate that allows for easy removal. For states that require front license plates, the factory #207010 Carbon Flash Front Frame Kit, fastens to the front fascia without drilling any holes in the bodywork.

107025	STO N SHO (ND)	84.95
207010	Factory (ND)	159.95

The Exclusive new Generation of Premium Paint Protection From the makers of the Original Stretch-To-Fit bras and mirror covers. Novistretch patent pending front end covers provide quality paint protection with incredible ease of use. The revolutionary material allows air to flow through, providing a clean look to your Corvette's front end while protecting your car's finish from bugs and road grime.

107415	Black Synthetic Stretch Mesh	159.95
---------------	------------------------------------	--------



**SEE IT ALL ONLINE
Including Apparel and
Accessories at**

WWW.CORVETTECENTRAL.COM

**NEW C7 PRODUCTS
ADDED TO OUR
WEBSITE OFTEN**

**Corvette
Central
.com**

Prices Subject to Change w/o Notice

Phone 800-345-4122 • 269-426-3342 • Fax 800-635-4108 • mail@corvettecentral.com • 13550 Three Oaks Road, Sawyer, Michigan